

STEIGER®
TB 290 pro



STEIGER® TB 290 pro

FEATURES

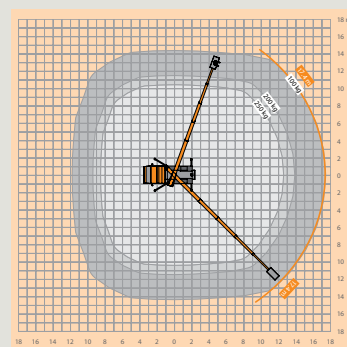
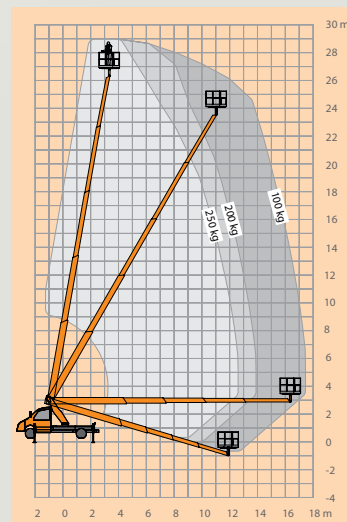
- 29m max. working height
- 17.4m max. outreach
- 14.3m max. lateral outreach
- 250kg basket load
- 3 movements simultaneously possible (lift, rotate, telescope) + basket rotation
- Improved work speeds
- Premium technology in highest stability with easy handling
- High-strength fine-grained steel for maximum stability
- Improved basket unit with new design
- Common parts to other STEIGER® models for even more operating and maintenance efficiency
- Reduced stock of spare parts through modular design
- Improved torsion-resistant substructure construction
- Boom system with laser-welded seam (less distortion, more precise and more stable)
- Short overall length and low construction height for high manoeuvrability
- Mounted on a Mercedes Benz Sprinter

The STEIGER® TB 290 pro - with its elaborate design and engineering innovations, has been designed and developed using RUTHMANN's latest steel fabrication techniques and calculation methods - offering customers top performance capabilities and maximum stability.

The working height has increased by 0.5m while the reach capacity has been enhanced by 1.2m backwards and 1.3m sideways. Featuring a bona-fide working height of 29m, the popular 3.5t model is ideal for a wide variety of tasks including gardening / landscaping, facade cleaning, and construction / installation assignments. The TB 290 pro remains the perfect choice in the 30m category.



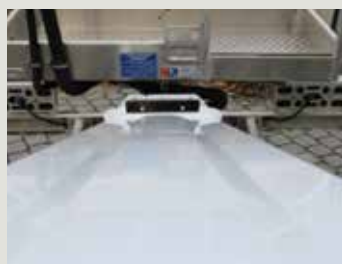
working height 29m
maximum outreach 17.4m
platform capacity 250kg



Under-ride protection



Worm-drive basket



Laser-welded seam



Chassis outrigger controls



Display in work basket



Worm-drive turret



Perforated, non-slip floor